



product description

Introduction

Features:

- 1000 nits Sunlight Readable LCD
- Long Life, Low Power Consumption LED Backlight
- -10°C~50°C Wide Operating Temperature
- Advanced Optical Bonding (AOT)
- High Shock & Vibration Resistance
- Resistive Touch Support
- IP65 Fascial Waterproof

Application:

- Marine
- Outdoor Display



Specifications

V1

Model Number	NPS1735
LCD Display	
Backlight	17" LED Backlight
Active Display Area	337.92x270.336 mm
Brightness	1000 cd/m2
Resolution	1280x1024 (SXGA)
Contrast Ratio	1000:1
Touch Screen	5-Wire, Analog Resistive / AR Glass
Optical	AOT
System	
Processor	Intelf Celeron M / Core 2 Duo Based Design
Chip Set	Intelf 945GM + ICH7M
Memory	DDR II DIMM 1GB
Ethernet	Intelf 82573L 10/100/1000Base-TX RJ45x2
Storage	SATA 2.5" HDD (Optional)
I/O Port	Audio Phone Jack (Line-in, Line-out, MIC-in) x 1, RJ45 x2,USB x4, COMx2 (RS232 x1, RS232 /422 /485 x1), DVI-I x1, VGA-out x 1,KB/MS PS2 x 1,Power AC-in x1
BIOS	Award
Wake on LAN	Yes
Watchdog Timer	Generates a time-out system reset
H/W Status Monitor	Support power supply voltages, fan speed and temperature monitoring
Expansion Interface	Mini PCI (internal)
Power	
Voltage	AC Input: AC 100 ~ 240V ;DC Input (Optional)
Power consumption	71W
Mechanical	
IP Rating	Fascial waterproof to IP65 standards when console mounted.
Construction	Aluminum Alloy Chassis
Mounting	Panel (Flush) Mount , VESA75/VESA100, Stand Mount
Dimension	409.5mm (W) x 363.1mm(H) x 91.3mm(D)
Net Weight	6.3kg
Environmental	
Operating Temperature	-10°C~40°C
Storage Temperature	-20°C ~ 80°C
Operating Humidity	5~95% @ 40°C, non-condensing
Certification	Designed to meet CE/FCC

Specifications are subject to change without notice.

All brands or product names are trademarks or registered trademarks of their respective companies.

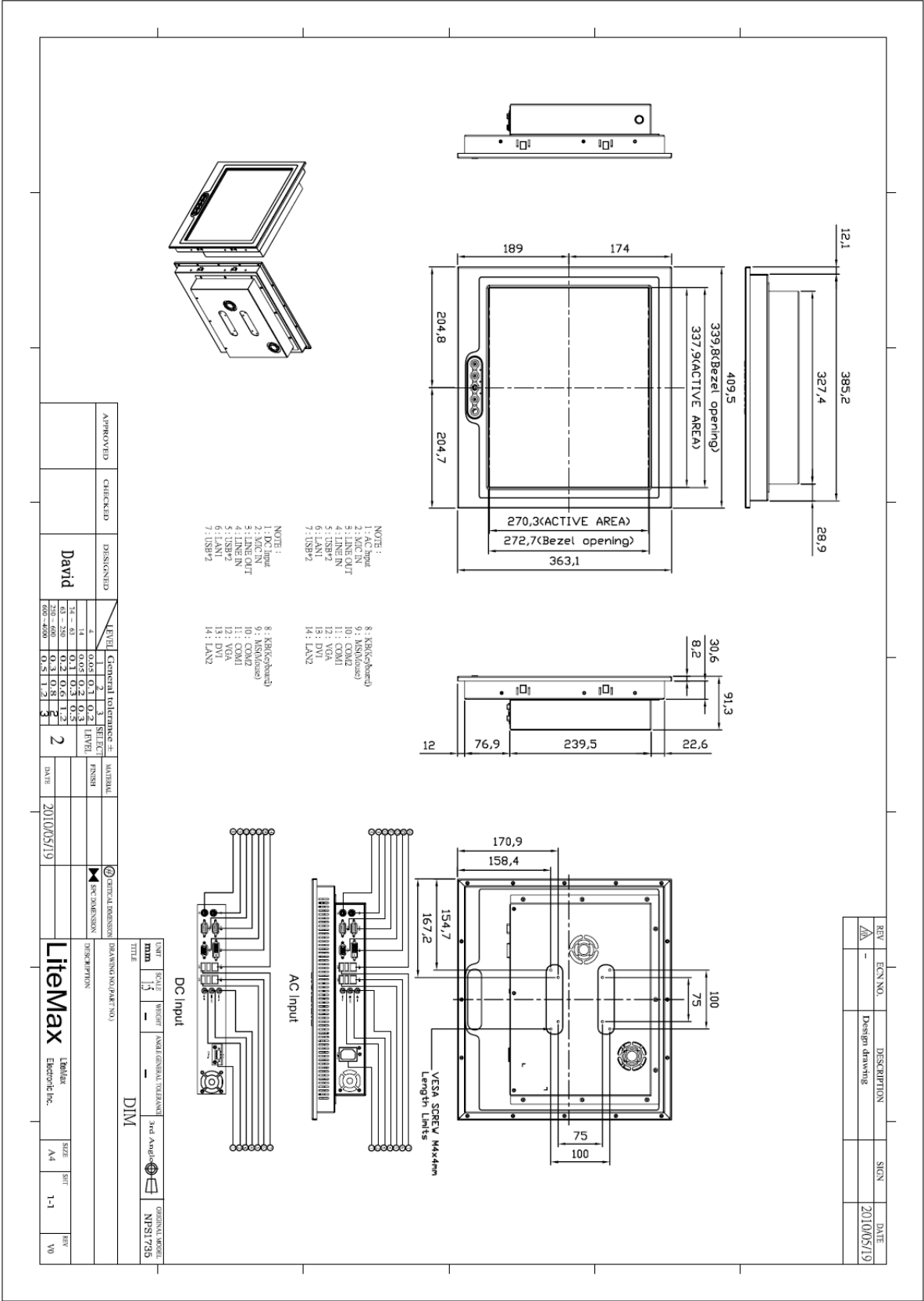




Mechanical Drawing

Outline Dimensions

Unit:mm





Ordering Information

Part Number	Description
NPS1735-ETAW-142-A01	17"LED B/L 1000nits.Touch Screen(Transparency:80%).Intel Celeron M 1.86GHz,DDR II.DIMM 1GB,RJ45*2,USB*4,COM*2.AC 100~240V,HDD/250GB,AOT,WP
NPS1735-ETAW-142-A02	17" LED B/L 1000nits.Touch Screen(Transparency:80%).Intel Celeron M 1.86GHz,DDR II.DIMM 1GB,RJ45*2,USB*4,COM*2.DC10~30V,HDD/250GB,AOT,WP
NPS1735-ETAW-363-A01	17"LED B/L 1000 Nits,Touch.Screen(Transparency:80%).Intel Core 2 Duo 2.16GHz.DDR II DIMM 2GB,RJ45*2,USB*4.COM*2.AC 100~240V,HDD/250GB.AOT,WP
NPS1735-ETAW-363-A02	17"LED B/L 1000 Nits,Touch.Screen(Trensparency:80%).Intel Core 2 Duo 2.16GHz.DDR II DIMM 2GB,RJ45*2,USB*4.COM*2,DC10~30V,HDD/250GB.AOT,WP

Optional Accessories

Part Number	Description
980000480010	SET.OTHER,CD for AP.(NPS1535/1735/1935),all
980000430010	SET,other,CD for XPe O.S Image.(NPS1535/1735/1935),all
321038174501	Print,Label,Serial,LP,1745,V0.Microsoft OS/XP Embedded.968TXPEEMB
810618301010	CABLE.POWER.AC.1830mm USA type
810618301090	CABLE.POWER.AC,1830mm Europe type
810618301050	CABLE.POWER.AC.1830mm UK type
810618301170	CABLE.POWER.AC,1830mm Australia type
810618301030	CABLE.POWER.AC.1830mm Japan type
840612073000	ADAPTER,12V,7.0A84W.LE-0316B120084.NLE-0316BS12V-AE

